



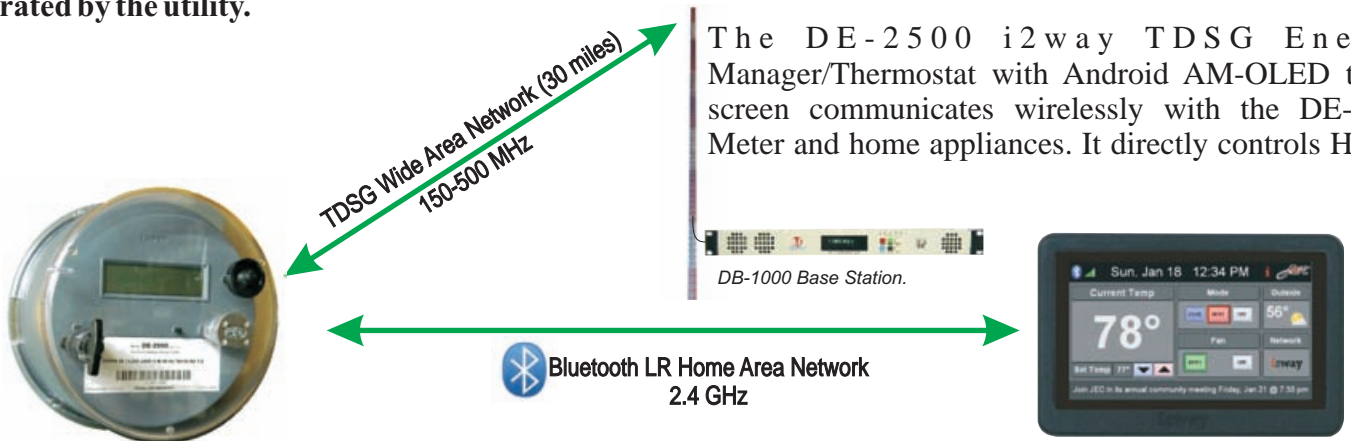
# Trunked Digital Smart Grid

PATENT PENDING



**i2way Corporation has developed a unique portfolio of secure, integrated and low cost utility solutions; The Trunked Digital Smart Grid. The i2way TDSG network integrates wireless control and monitoring of consumer electric consumption, communications to and from electric substations, plus wireless broadband to the utility's field force. All using a single integrated wireless network, owned and operated by the utility.**

compatible trunked data on as many as 32 radio channels, providing broadband equivalency over long distances with UHF's non line-of-sight attributes. At the customer meter socket, the DE-2000 Smart Meter/Communications Hub provides normal Smart Meter functions, combined with 200 amp service disconnect, plus shorter range Bluetooth LR Home Area Network broadband at 400 kbps.



The DE-2500 i2way TDSG Energy Manager/Thermostat with Android AM-OLED touch screen communicates wirelessly with the DE-2000 Meter and home appliances. It directly controls HVAC

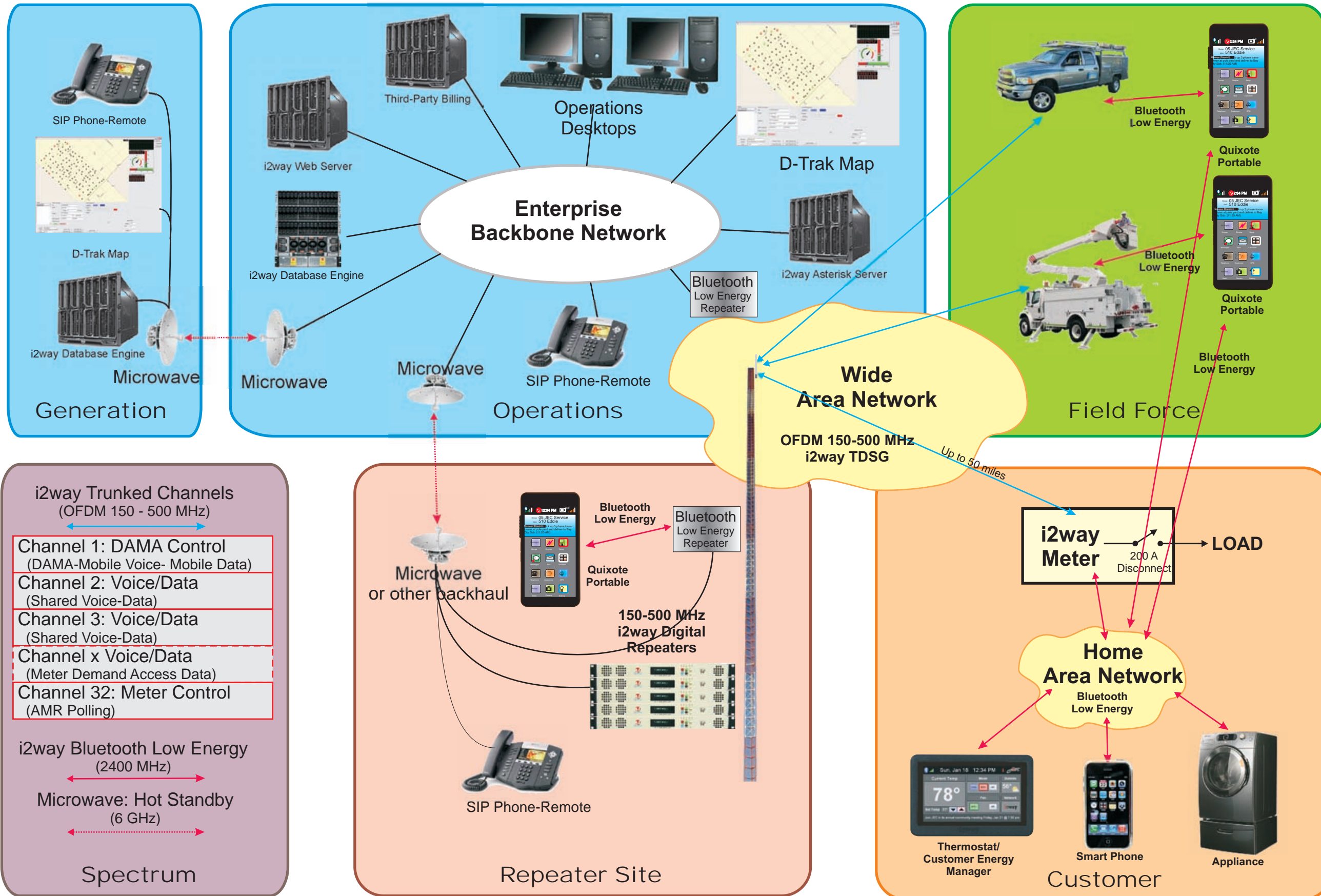
*i2way DTSG DE-2000 Communications Hub/Revenue Meter. High power multi-channel UHF communications with i2way DTSG Network plus Bluetooth LR links to Energy Manager, home appliances and other utility meters.*

*i2way DTSG Energy Manager/Thermostat with Android OLED touch screen communicates wirelessly with the DE-2000 Meter and home appliances. It directly controls HVAC systems, allowing demand control of loads by utility at critical unexpected peaks.*

To provide utilities with mission critical, utility-grade, wide area service, i2way employs land mobile frequencies available worldwide in the 150 to 500 MHz bands. Combining digital mobile voice service with fixed data operations gives a normally secondary data service, exclusivity in the radio bands. The UHF frequencies under 500 MHz provide long range, direct to utility meters.

systems, allowing demand control of loads by the utility at critical unexpected peaks. The DE-2500 provides all the functions of a standard electronic thermostat, plus real time Grid Status display, Time of Day Billing, Demand Load Management (by thermostat control), invoice display and bill payment by credit card or bank debit, Prepaid Billing, selection of alternative sources of energy, NOAA weather alerts, and electric car charging management. It connects easily in place of conventional HVAC thermostats, with no wiring to the remote meter. Up to 16 units may be used in multi-zone installations.

The field-proved DB-1000 50 watt base station TDSG transceiver provides 10,800 bits per second IP



DE-2000

i2way DTSG DE-2000 Communications Hub/Revenue Meter. Two watt long range multi-channel UHF communications with i2way DTSG Network plus Bluetooth LR links to Energy Manager, home appliances and other utility meters. The meter section features 0.1% accuracy, and a 200 amp service disconnect switch.



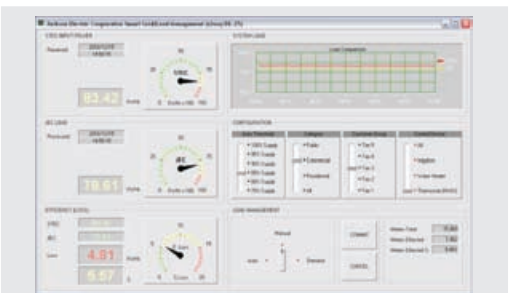
DE-2500

i2way DTSG Energy Manager/Thermostat with Android OLED touch screen communicates wirelessly with the DE-2000 Meter and home appliances. It directly controls HVAC systems, allowing demand control of loads by utility at critical unexpected peaks.



DB-1000

i2way DTSG 50 watt VHF/UHF Base Station. Years of continuous-duty field-proven performance in the 150-170, 220-222 and 450-500 MHz. With its built-in bands. With its built-in 3 GHz controller and 20 GB of non-volatile memory, the DB-1000 is the critical hub of a mission critical DTSG network.



DE-25 Demand Load Management Software

## i2way DE-2500 Wireless Energy Manager

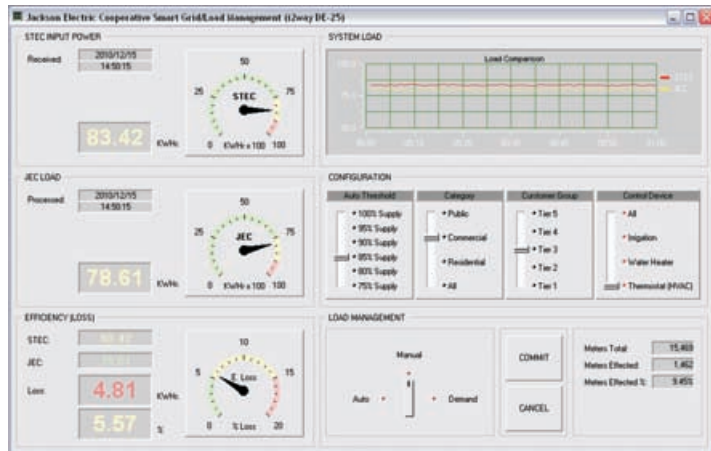


The compact 2 x 4 inch i2way Wireless Energy Manager provides a combination of "front panel" for a DE-2000 Smart Meter plus functions as a programmable HVAC thermostat. It graphically and continuously displays in real time the well known meter "rotating wheel", which spins proportionate to instantaneous energy usage. The unit allows the user to program heating and cooling, both current and preset, using touch screen "wheels" familiar to users of "smart phones". Utility bills may be displayed on the screen, and payments made electronically. The DE-2500 uses the Android operating system and can execute third party applications.

Centralized management of tens of thousands of customer loads is easily managed from i2way's DE-25

Demand Load Control Application. The program permits a utility to select a absolute reduction in load in kilowatts, and cause the entire population of controlled loads (by way of the customer's DE-200 meter systems) to individually shed the requested load by either increasing (or decreasing) target temperature settings of each customer or totally shutting down high volume loads.

The DE-25 main console displays actual delivered energy in near real time on a substation by substation basis, or by any predetermined grouping of customers. The software also compares gross input with measured usage, providing instantaneous indications of overall grid efficiency and alerts of possible faults. Close integration within the TDSG allows the program to carefully prevent load snapback.



TDSG DE-25 Demand Load Management Software

### i2way Corporation

#### Subsidiaries:

- i2way Australasia Pty Ltd (Australia)
- i2way Canada Inc. (Canada)
- i2way UK Ltd (United Kingdom)

